



# In-slip Vessel Monitoring



MarineSync



# Monitor your vessel From your home.

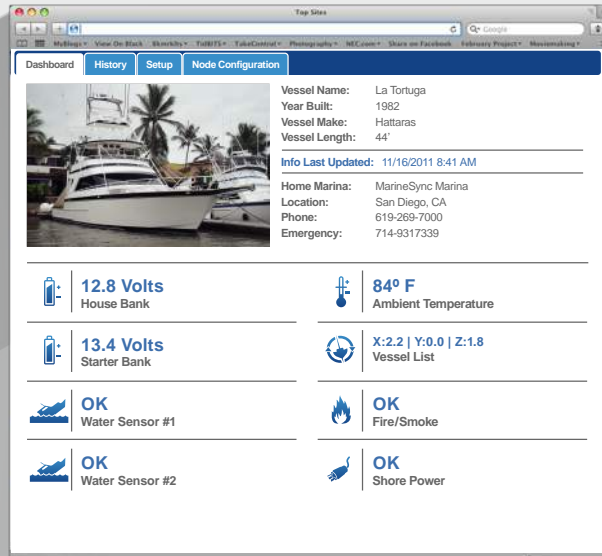


Experienced boat owners know that something as common as a failed bilge pump, dead battery, disconnected shore power, or extreme listing can lead to catastrophe.

“MS2 Vessel Monitoring offers more than basic security at the marina. Boaters have true peace of mind and feel more confident about being away from their vessels with vessel notifications. Tenants have received timely notices to prevent a vessel sinking as well as notifications of a vessel leaving the marina.” - Kathy O'Brien, Sun Harbor Marina, San Diego, CA

## Check In Anytime, Anywhere

Whether you live down the street or in a different state, MS2 Vessel Monitoring provides 24/7 access to your floating investments. Critical onboard conditions such as battery voltage, temperature, bilge, smoke and fire detection, and other onboard safety systems are all be available online.

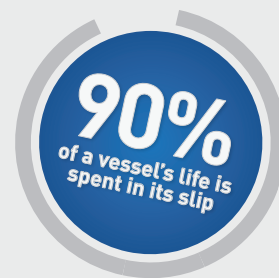


To see our demo video, and for more info, visit:

**MarineSync.com/ms2demo**

## Staying Connected Has Never Been Easier

MS2 Vessel Monitoring provides a safeguard, immediately notifying you and additional subscribers of your choosing when your vessel may require attention. MS2 can also be configured to notify the marina personnel if an immediate response is required.



MS2 Transponder



Transponder Monitoring Capabilities

## What's Next?

Watch our demo video at [www.marinesync.com/ms2](http://www.marinesync.com/ms2), then contact MarineSync at 888.988.SYNC or go to the [marinesync.com](http://marinesync.com) store to purchase your transponder and get started with your MS2 system.



[WWW.MARINESYNC.COM](http://WWW.MARINESYNC.COM) | 888.988.SYNC  
PO Box 80174 | San Diego, CA 92138